

ABOUT US

Our highly qualified faculty members deliver instruction on state-of-the-art tools, techniques and systems, supported by experience gained through applied research and consulting projects. Instruction is augmented by guest speakers, group projects and discussions, and input from our industry affiliates. **Dr. Symeon Christodoulou**, leader of the construction management group, and **Dr. Loukas Dimitriou**, leader of the transportation engineering group, are prominent researchers and academics in their respective fields, recipients of several academic and research awards, national representatives to international committees, authors of numerous publications and reviewers for over 50 scientific journals and technical conference committees.



INDICATIVE COURSES

A. Core Courses	
CEE 511 - Construction Engineering and Management	8 ECTS
CEE 516 - Building Information Models	8 ECTS
CEE 517 - Operations Research in Civil & Envir. Eng.	8 ECTS
CEE 560 - Advanced Transport Planning	8 ECTS
CEE 563 - Adv. Topics in Traffic Engineering and ITS	8 ECTS
B. Technical Electives	
CEE 512 - Risk Analysis in Civil and Envir. Eng.	8 ECTS
CEE 513 - Specifications and Conditions of Contracts	8 ECTS
CEE 515 - Adv. Topics in Construction Management	8 ECTS
CEE 561 - Highway Design and Road Safety	8 ECTS
CEE 564 - Civil/Transport Economics and Finance	8 ECTS
CEE 565 - Multi-Modal Systems and Logistics	8 ECTS
CEE 566 - Transit Systems	8 ECTS
CEE 567 - Advanced Topics in Transport Infrastructure	8 ECTS
CEE 581 - Environmental Risk Assessment	8 ECTS
CEE 650 - Independent Study	8 ECTS
Degree-Oriented Courses	
CEE 680 - Thesis Research (MSc)	54 ECTS
CEE 689 - Research Project (MEng)	10 ECTS
CEE 610 - Seminar for Graduate Students	0 ECTS



Construction & Transport Infrastructure Management

GRADUATE PROGRAMS

Join Us And Fast-Forward Your Career!

WHY CTIM AT UCY?

From our world-class instructional facilities and research laboratories at UCY's campus, we engage in leading-edge teaching, training, fundamental and applied research. With case-based learning, small student-to-instructor ratios, funded research, and spanning future-focused disciplines (such as construction and transport management, information technology, BIM and ITS), we produce skilled professionals who can use the latest technologies intelligently to create sustainable solutions for our fast-changing world.

CONTACT US

@UCY-CEE/CTIM



1, Panepistimiou Ave., P.O. Box 20537
1678 Nicosia, Cyprus

Phone: +357 2289 2249
Fax: +357 2289 5317
Email: cee@ucy.ac.cy

<http://www.eng.ucy.ac.cy/CTIM/index.html>
<http://www.ucy.ac.cy/CEE/en/>



Construction & Transport Infrastructure Management

Degree Program	ECTS	Course Requirements By Course Category			
		A	B	C	D
Ph.D.	240	≥ 6		≥ 4	
M.Sc.	110	≥ 4	≥ 1	≤ 1	
M.Eng.	90	≥ 5	≥ 3	≤ 1	≤ 1

The Department of Civil and Environmental Engineering (CEE) of the University of Cyprus (UCY) offers graduate degree programs in Civil Engineering with a specialization in Construction and Transport Infrastructure Management (CTIM), at both the Master's (M.Eng., M.Sc.) and doctoral (Ph.D.) levels.

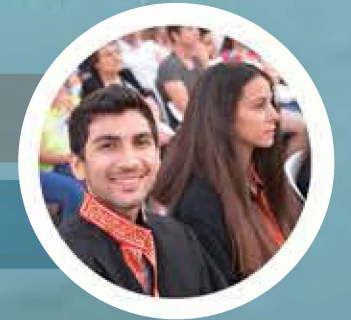
CTIM programs teach professionals the broad array of technical and non-technical activities associated with construction and transport infrastructure management and, further to a program-specific number of research units and seminars, they consist of courses from the following four categories: (A) core courses; (B) technical electives; (C) CEE-offered courses; (D) UCY-offered courses. Students are required to take a specified number of courses from each category, as shown in the side Table. The programs are based on three equally important pillars, as shown below.



The CTIM Program At A Glance

Offered CTIM programs are at the graduate and doctoral levels, and are either research-based (M.Sc., Ph.D.) or course-based (M.Eng.), with an excellent balance of theoretical and applied knowledge.

- M.Eng. (90 etcs) and M.Sc. (110 etcs) programs
- Ph.D. program (240 etcs)



The CTIM graduate program at UCY covers the most current theories and practices needed by the construction & transport engineering and management professional. It is taught by faculty and industry professionals who hold particular prominence in their respective fields, and is complemented by knowledge infusions from visiting scholars. CTIM programs utilize case-based learning and are ideal for engineers, construction and transportation professionals.

Key Points

- ✔ Choice of taught or research-based programs
- ✔ Balanced program of core and technical elective courses
- ✔ World-class faculty and adjunct professors
- ✔ Small student-to-instructor ratios
- ✔ Case-based learning
- ✔ Active and externally funded research

1

Academic

As a graduate of this program you will be equipped with profound awareness of the technical, economic and management aspects necessary for successfully solving construction and transport problems. CTIM courses follow a case-based learning paradigm, are offered by distinguished faculty and industry professors, and are taught in classes with small student-to-instructor ratios.

2

Research

Our research focuses on issues of national and international interest, of fundamental and/or applied nature, all intertwined in a self-feeding research and academic loop. With multi disciplinary research teams of graduate students and research associates, we are in a constant quest for funded research projects and, most importantly, for the joy in advancing the state of knowledge in our field.

3

Professional

The CTIM program provides its graduates with the necessary skills and technological tools to fast-forward their career, and prepares them for a variety of employment opportunities in the construction and transport industries, in both the public and private sectors. The infusion into CTIM courses of applied knowledge and career-enhancing professional practice is evidenced throughout all CTIM programs.



Tuition & Financial Assistance

Tuition fees for CTIM Master's degrees are €4,100 per program (2015-2016), and for Ph.D. candidates are €3,200 for holders and €5,200 for non-holders of Master's degrees, respectively. For Ph.D. candidates, each year of study beyond the 6 years carries additional tuition fees of €1,000 per year, with the maximum for a Ph.D. degree set at €7,200.

Tuition fees are subject to change, as per UCY's fee policy. Various financial assistance schemes are available for qualified applicants.