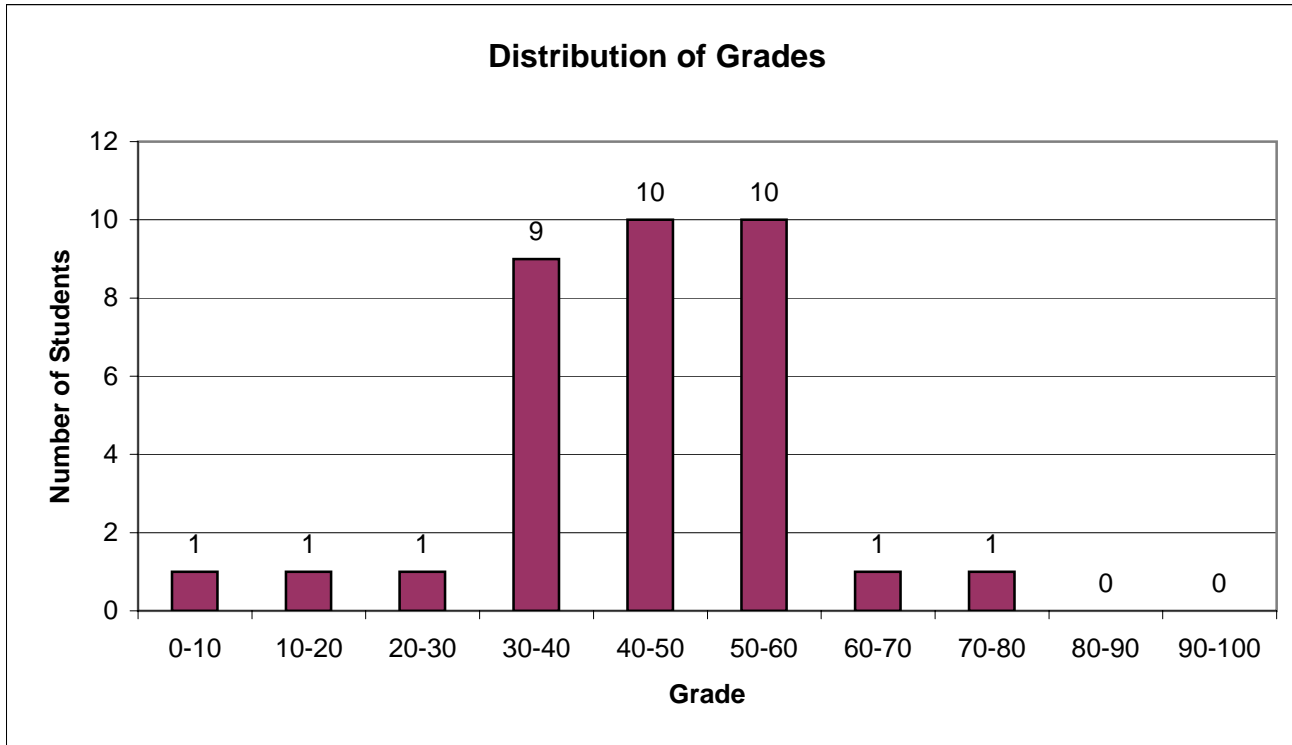


CEE 310 Construction Management, I
Midterm 1 (Fall 2007)



Histogram		
Range		Students
0 -	10	1
11 -	20	1
21 -	30	1
31 -	40	9
41 -	50	10
51 -	60	10
61 -	70	1
71 -	80	1
81 -	90	0
91 -	100	0

Average	45.38
Std.Dev.	14.08
Minimum	0.00
Maximum	79.00