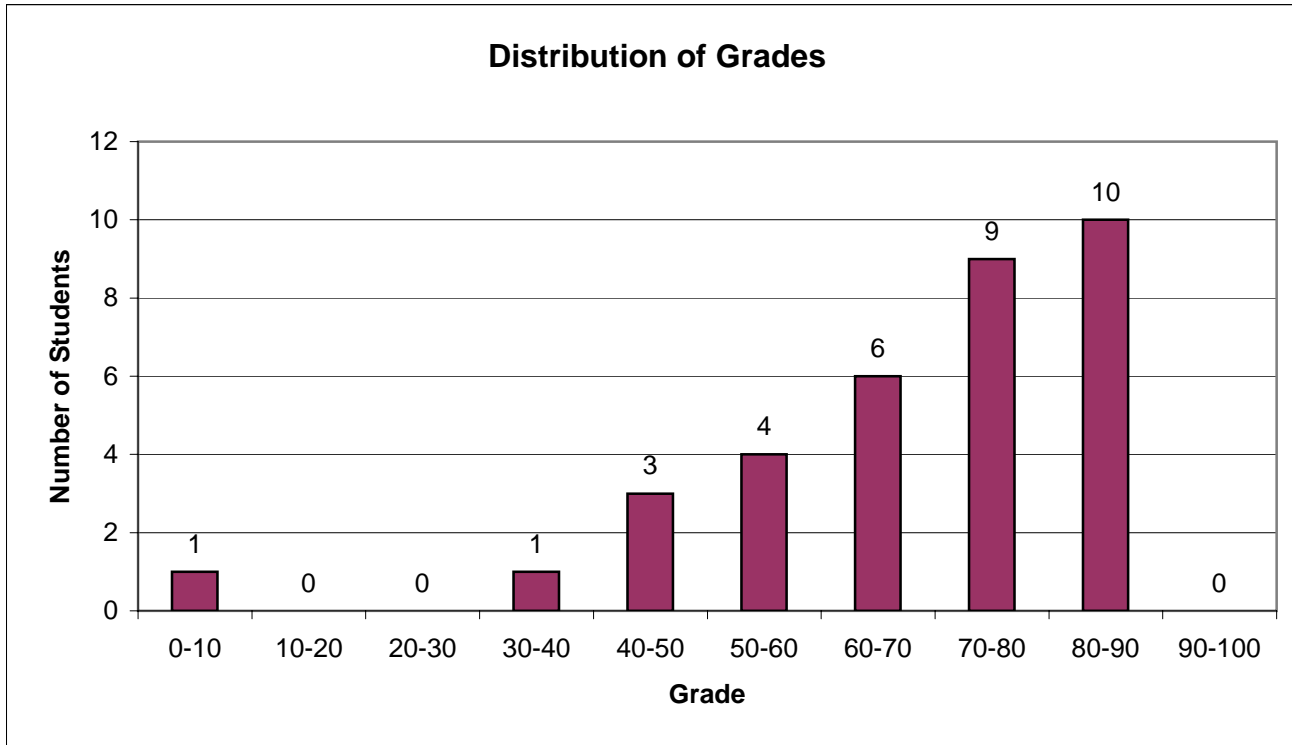


CEE 310 Construction Management, I
Midterm 2 (Fall 2007)



Histogram		
Range		Students
0 -	10	1
11 -	20	0
21 -	30	0
31 -	40	1
41 -	50	3
51 -	60	4
61 -	70	6
71 -	80	9
81 -	90	10
91 -	100	0

Average	68.47
Std.Dev.	18.73
Minimum	0.00
Maximum	90.00